

TITAN PUMPS

Houston, Texas

Titan leads the way!

ISO 9001
CERTIFIED



Heavy Duty Solids Handling Self Priming Trash Pumps



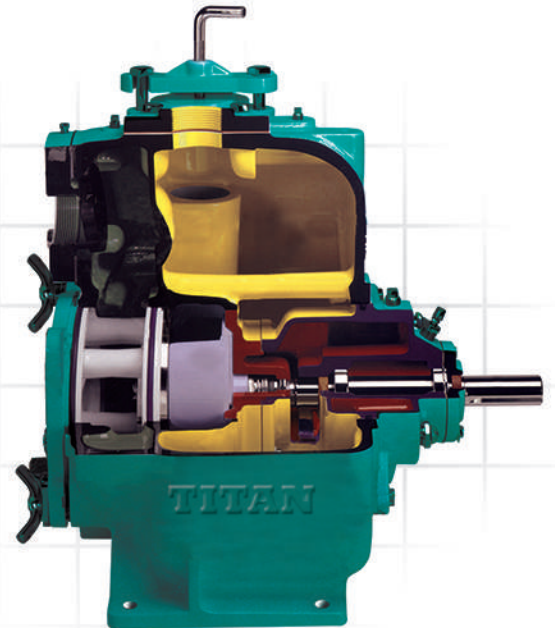
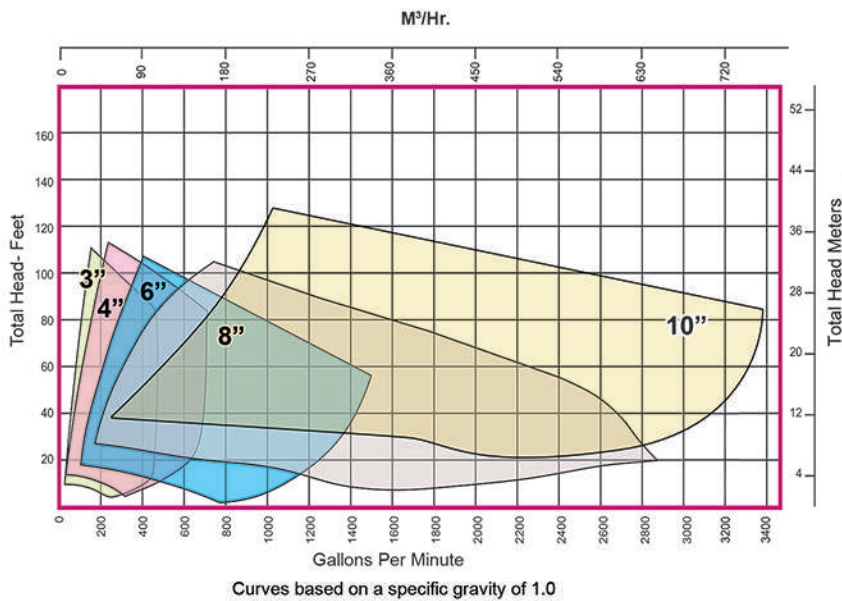
*Pumping
By
Design!*



**In Stock!
... Give us a Call!**

MANUFACTURING • SALES • SERVICE

Pump Series	Max Capacity	Max Head	Max Solids	Sizes Available
Standard T ▶	5,500 GPM	120'	3" (75mm)	2", 3", 4", 6", 8", 10" & 12"
Super-T ▶	5,500 GPM	120'	3" (75mm)	3", 4", 6", 8" & 10"
Standard U ▶	1,300 GPM	180'	1.25" (31mm)	3", 4" & 6"
Super-U ▶	1,300 GPM	180'	1.25" (31mm)	3", 4" & 6"



Cut Away View

Material of Construction:
Ductile iron, 316SS, CD4Mcu, ADI



Fully Customizable Skid Packages available!

Titan Self Priming Heavy Duty Trash Pump

A Guide to Trash Pumps

Rotating Assembly

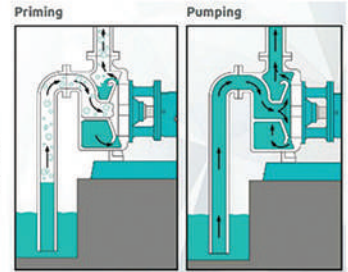
Standard T-Series
Super-T Series
Standard U-Series
Super-U Series



- Sizes 2" – 12"
- Easy maintenance design
- Quick interchangeability

Self-Priming Capability

- Max self-priming 25'
- Dual volute design
- Only one-time liquid charge
- Casing air separation design



Impellers

Super-T

- Two-vane semi open impeller
- Solids handling 3" max (75mm)
- Reduce foreign material build up



Super-U

- Four-six vane semi open impeller
- Solids handling 1.25" max (31mm)
- Higher operating head capacity



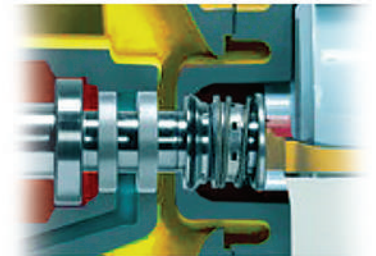
Seal System

Standard Series

- Single seal system

Super Series

- Dual seal system
- Enhanced protection
- Quick external monitoring



Mechanical Seals:

Tungsten Carbide / Silicone Carbide with
Viton / Aflas Elastomer

Oilseal : Buna / Viton

Self-Cleaning Wear Plate

- Robust solids handling
- Retrofittable into existing models
- Reduce clogging with sawtooth design
- Less downtime & maintenance



Material of Construction:
Ductile iron, 316Ss, CD4Mcu, ADI

External Adjustment

- External shim less cover plate with pusher bolts
- Easy adjustment of clearance between wear plate and impeller
- Impeller & seal assembly adjustment not necessary
- Fast wear plate maintenance



Contact a Sales team member today!
Email: sales@titanpumpsinc.com
Call (713) 283-7700 • (281) 817.5600

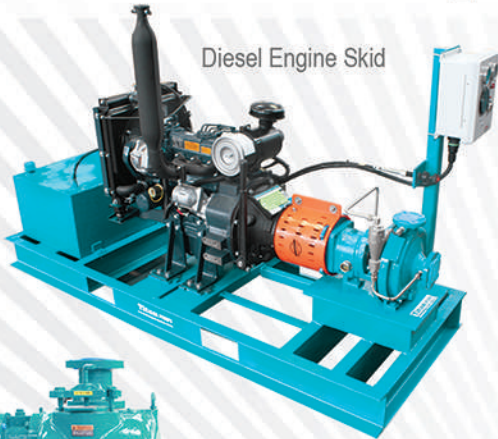
Titan

PUMPS MANUFACTURING, INC.

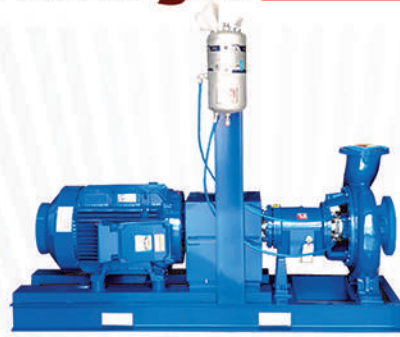
website: www.titanpumpsinc.com



Custom Pump Packages



Diesel Engine Skid



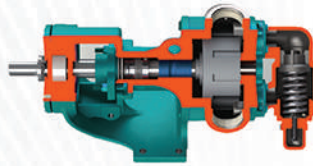
ANSI Pump with API plan and Seal Pot



Duplex Self-Priming Trash Pump



Electric Motor Skid



Rotary Gear Pump



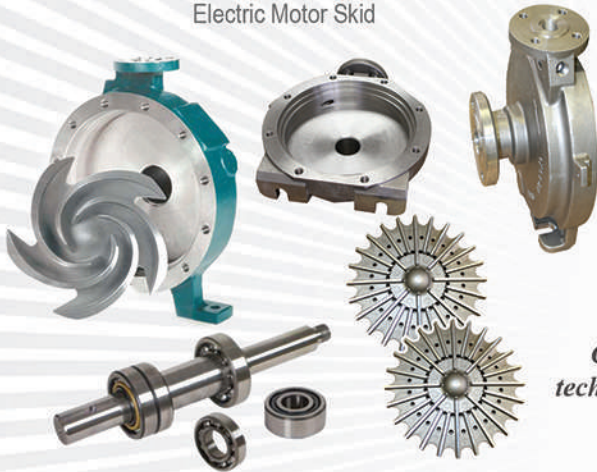
Diaphragm
Food Grade Pump



Poly Pump



ANSI
4796



**Parts
...In Stock!**



Type 1 Seal



Trash Pump Cartridge Seal



Standard Bore



Tapered Bore

Call Titan Engineering Department for
technical questions or applications assistance

(713) 283.7700
sales@titanpumpsinc.com



Titan Facility: 45,000 sq. ft.